

Our Aims are our stepping stones towards our Vision.

Our school community work together to:

- show love and respect for God, ourselves, others and the world we live in;
- grow in faith by participating in Liturgy, Sacraments, prayer and worship
and by trying to live like Jesus every day;
- create a happy, caring, honest, friendly and nurturing environment
where everyone is valued and supported;
- share high standards of welfare, care, behaviour, achievement and attainment
- we celebrate success!
- achieve the best outcomes for every child, in all areas, through positive partnerships;
- understand and forgive each other, as well as celebrate our differences.



Partnership Working

- effective communication and work with parents, parish and partners
 - School Blog, Class Dojo, informal and formal meetings, GIRFEC agenda, parent workshops - curricular workshops, God's Loving Plan, Sacramental information
 - Parent Council & PTA
 - fundraising - SCIAF, Mary's Meals, Macmillan
 - Granny & Parent helpers
 - community litter picks
- work with partners to develop as a nurturing school
 - transition activities and meetings - P1 and P7
 - Health - Drug & Alcohol Team, Dental, WL Excite, healthy eating and exercise
 - Newland's Day preparations and celebrations



Opportunities for Personal Achievement

- celebration of wider and sporting achievements (assembly and display)
 - house point system
 - Dojo points
 - star writers
 - daily mile for some classes
 - house captains
 - P7 monitors
 - P6 buddies
 - after-school clubs
- netball, football, P6 homework, athletics, enterprise
 - paired reading - P3 & P6; P1 & P7
 - instrumental tuition
- sports & competitions - swimming, cross country, badminton, quizzes, Young Writer, Young Musician, EuroQuiz

Curriculum Planning

- a coherent 3-18 curriculum
- a clear focus on prioritising literacy, numeracy, health and wellbeing and religious education
- IDL planning which promotes natural links across learning and includes local history
- focused, smart planning of experiences and outcomes within the benchmarks and across the curriculum
- developing skills for learning, life and work
- differentiated and challenging curriculum
- high quality learning and teaching approaches that are interesting, challenging, enjoyable and motivating
 - Assessment is for Learning
 - high standards and achievable targets
- staff development to enhance learning and teaching
 - based on design principles
 - 4 contexts for learning
 - use resources effectively including staff and ICT
 - learn languages
 - be financially aware



Excellence and Equity

at

St. Mary's Primary School



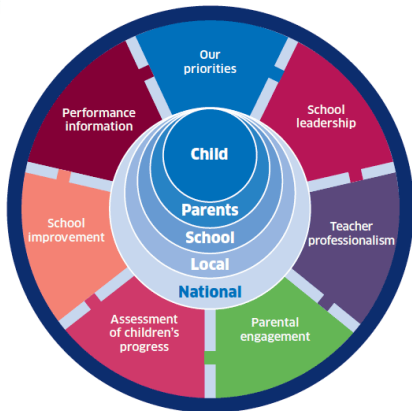
Our Vision is to work together
in a *positive environment* of
love, faith, respect and *friendship*.
We are always striving for **excellence**,
to **be the best we can be!**

Opportunities to Contribute to the Ethos and Life of the School

- pupil groups for all children
 - Pupil Council, Eco, Fairtrade, Newsletter, School Blog, Playground, Community Rights Respecting School, Health Promoting School
 - JRSO
 - P7 monitors
 - P6 buddies
 - Enterprise
 - Sports festivals
 - Health week
- celebrations, Mass, Sacraments
- recognition of national events e.g. World Book Day, European Languages Day

NATIONAL IMPROVEMENT FRAMEWORK FOR SCOTTISH EDUCATION

ACHIEVING EXCELLENCE AND EQUITY



Responsible Citizens

Effective Contributors

Confident Individuals

Successful Learners

